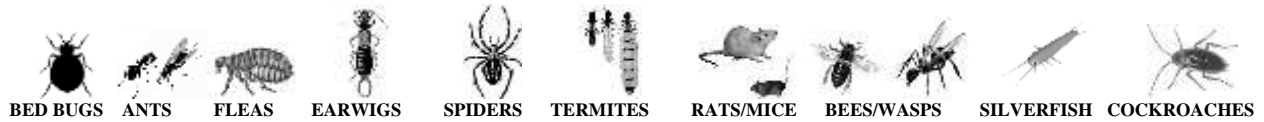


TEAM

# ***RID A MITE***

**TERMITE AND PEST CONTROL**



## **CLOTHES MOTH PREPARATION & MAINTENANCE**

This letter is to prepare you for your upcoming interior pest control treatment. Please follow the directions below in order for the treatment to be a complete success. *Preparation is 95% of eradication.*

- Clear baseboards throughout the home.
- Completely empty, wipe & vacuum (3x) all linen/clothing closets.
- Pile items on tables, couches, etc, or in middle of floors (not against baseboards).
- Clear & clean/vacuum (3x) entire house & all closets completely.
- After vacuum-cleaning, dispose of the sweepings promptly. They may contain larvae, eggs, or adult insects. If you leave sweepings in the cleaner, you may transfer an infestation from one place in the home to another.
- Dry cleaning or thoroughly laundering ALL items in hot water (temperature above 120°F for 20 to 30 minutes) kills all stages of insects. This is the most common and effective method for controlling clothes moths in clothing, blankets, and other washable articles. (Because many woolen garments should not be washed in hot water, dry cleaning may be the only suitable cleaning option.) Keeping fabrics clean also has another advantage: insects are less likely to feed on clean fabrics than on heavily soiled ones.
- You may also take all items including clothing, linens, pillows, etc. and place in a black or dark colored plastic trash bag and leave in the heat/sun for 24-48 hours.
- Clean rugs and carpets thoroughly and frequently, and rotate them occasionally. Rotation is important because insects usually feed under heavy pieces of furniture, where cleaning is inconvenient, rather than in the open, where regular cleaning, light, and movement of people keep down infestation.
- Be prepared to vacate all humans & pets for approximately 2-3 hours following treatment, if you have fish aquarium(s) cover them and unplug the air pump (We are not responsible for your fish).
- When the treatment is completed you may return your items without fear of contamination.
- Allow 2 full weeks for treatment to take full effect, if you are still having a problem after that please feel free to call our office.

**Thank you for your business & referrals.**

---

6308 Woodman Ave., Suite 115, Van Nuys, Ca 91401 - Phone: 818-399-7285 Fax: 818-988-0899  
Email: [tony@teamridamite.com](mailto:tony@teamridamite.com) \* [april@teamridamite.com](mailto:april@teamridamite.com) \* [www.teamridamite.com](http://www.teamridamite.com)